

18.5" 1000 NITS HIGH BRIGHTNESS

INDUSTRIAL-GRADE TOUCH MONITOR



1000 Nits



1920×1080



10-Point Touch



Auto Dimming



HDMI / VGA



IP65 Front Panel



Optical Bonding



MODEL NO.:

TK 1850/T

With touch

TK 1850/C

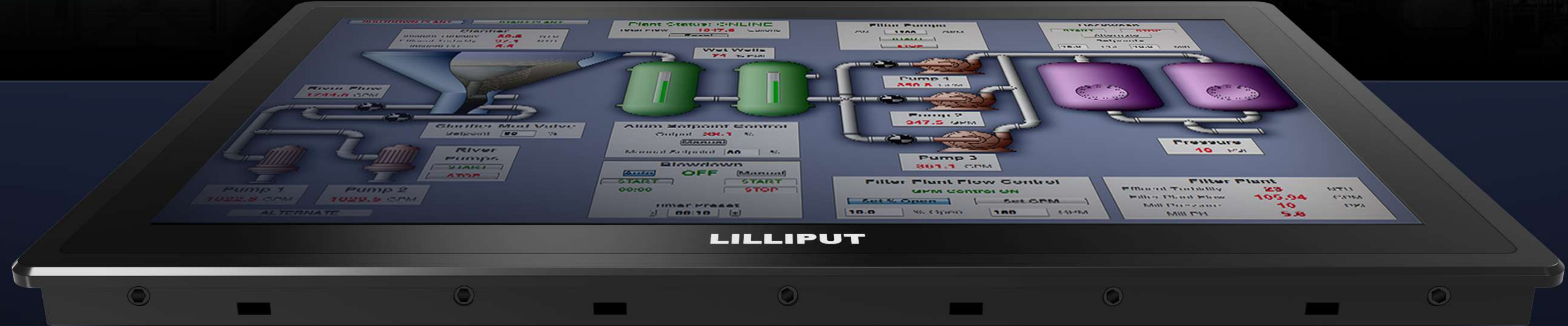
Without touch



7H HARDNESS

The hardness of the screen is greater than 7H and it has passed IK07 test.

1000 NITS



Touch monitor features with 1000 nits high brightness for outdoor sunlight readable.



18.5" FHD

18.5" Industrial-grade touch screen panel with 1920×1080 resolution.



1000 NITS

The screen can still be seen clearly in outdoor use without hindering operation.



AUTO DIMMING

Depending on the intensity of ambient light, the brightness of screen will be automatically adjusted to save power.



No Anti-glare

Anti-glare

ANTI-GLARE

SCREEN WITH ANTI-GLARE COATING

The optical bonding process can remove the air layer between the LCD panel and the glass, ensuring that foreign objects such as dust and moisture will not damage the LCD panel. Anti-glare screen can reduce reflective glare in the environment.

7H AND IK07

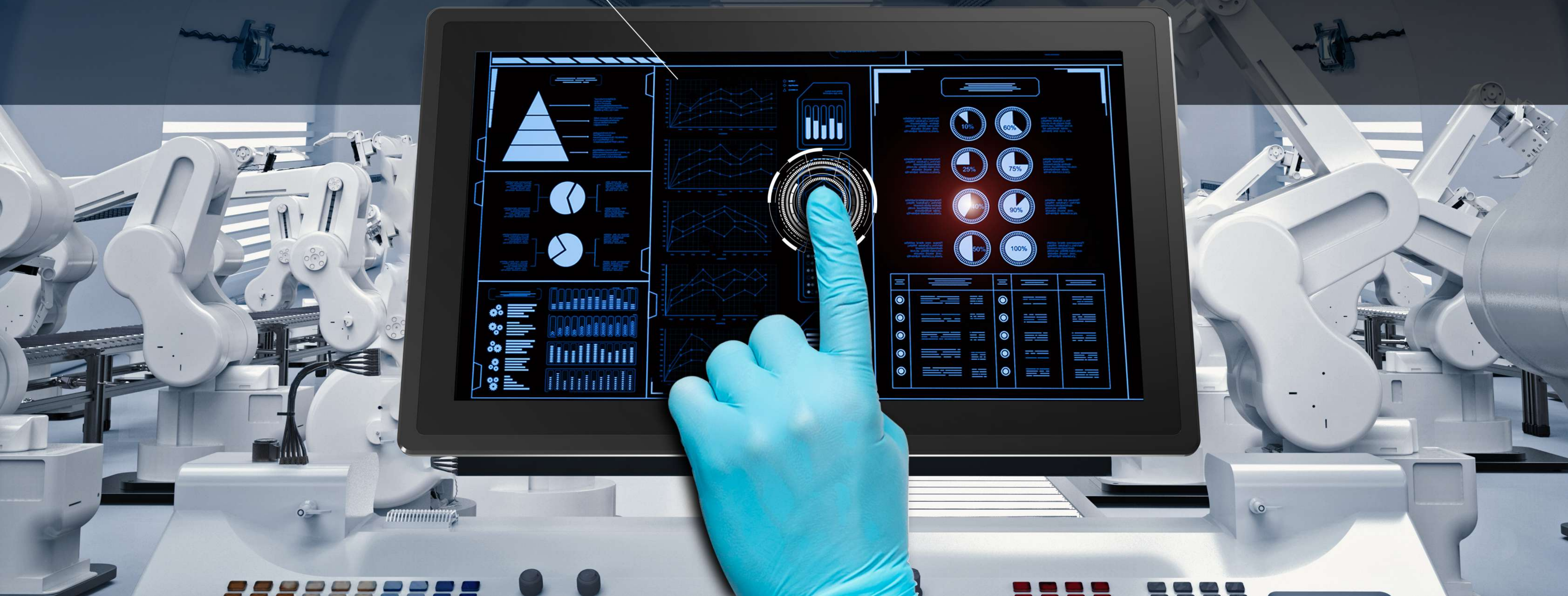
HARDNESS/COLLISION

The hardness of the screen is greater than 7H and it has passed IK07 test.

HIGH SENSITIVITY

GLOVE TOUCH

Operate with wet hands or a wide range of gloves, such as rubber gloves, latex gloves and PVC gloves.



HDMI / VGA / AV

RICH INTERFACES

The monitor has a rich interfaces, including HDMI, VGA and AV interfaces that can transmit FHD video. USB ports support touch function and upgrade.



ANTI-DROP
Anti-drop design for cables

DC POWER IN
12V-24V Input

EARPHONE JACK
3.5 mm audio output

AUDIO IN
3.5 mm audio input

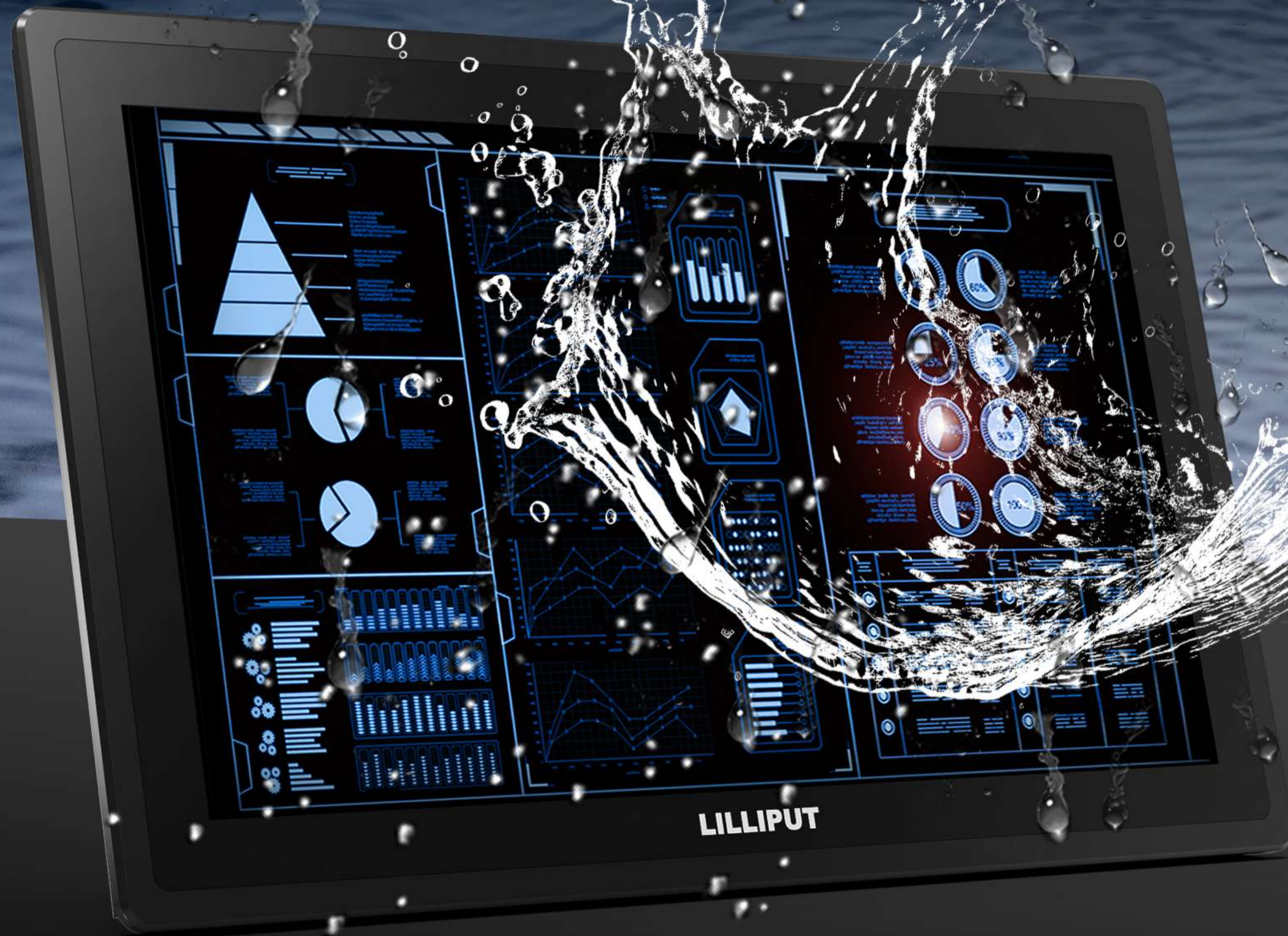
VIDEO IN
RCA port for video input

USB-A
For touch function

VGA IN
Support up to 1080p 60Hz

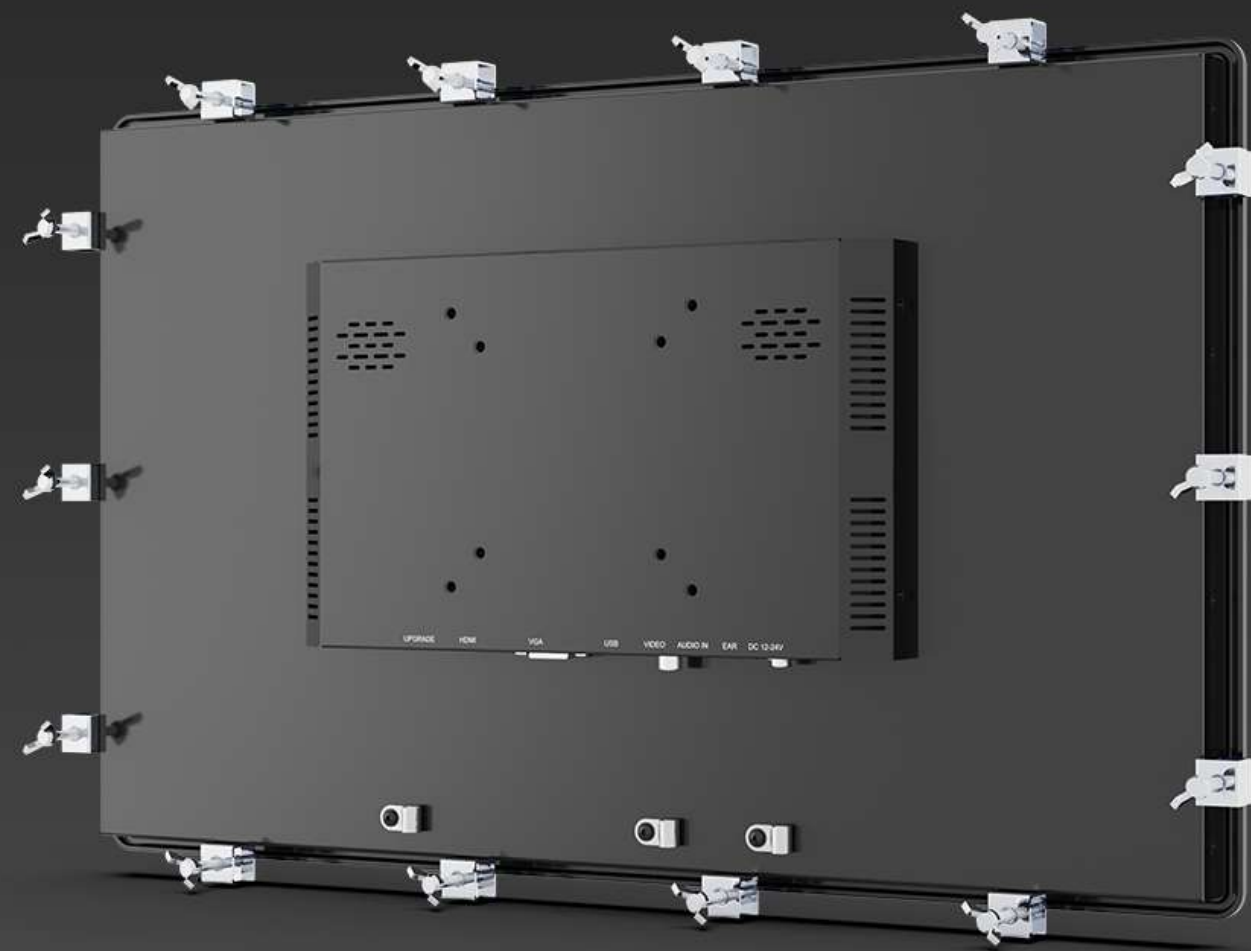
HDMI IN
Support up to 4K 30Hz

UPGRADE
firmware upgrade



IP65 / NEMA 4 FOR FRONT PANEL

Front panel of the monitor is designed to carry IP65 rating and NEMA 4 degree of protection which offer complete protection against particles, and a good level of protection against water projected by nozzle against monitor from any direction.



SCREWS FOR FIXING

The monitor can be embedded in a panel by using the special fixing screw kits.



VESA 75/100MM BRACKET

Quality folding VESA 75/100mm bracket that can be placed on a table or fixed to ceiling.



INDUSTRIAL CONTROL



DASHBOARD INTERFACE



SMART LOCKER

SPECIFICATIONS

DISPLAY	Touch Screen	Capacitive touch
	Panel	18.5" LCD, 1920×1080 resolution
	Aspect Ratio	16:9
	Brightness	1000 nits
	Contrast	1000:1
	Viewing Angle	170°/ 170°(H/V)
	Coating	Anti-glare, anti-fingerprint
	Hardness / Collision	Hardness ≥7H (ASTM D3363), Collision ≥1K07 (IEC6262 / EN62262)
INPUT	HDMI	1
	VGA	1
	Video & Audio	1
	USB-A	For touch and upgrade
SUPPORTED FORMATS	HDMI	2160p 24/25/30, 1080p 24/25/30/50/60, 1080i 50/60, 720p 50/60...
	VGA	1080p 24/25/30/50/60, 1080pSF 24/25/30, 1080i 50/60, 720p 50/60...
	Video & Audio	1080p 24/25/30/50/60, 1080pSF 24/25/30, 1080i 50/60, 720p 50/60...
AUDIO IN/OUT	Speaker	2
	HDMI	2ch
	Ear Jack	3.5mm - 2ch 48kHz 24-bit
POWER	Input Voltage	DC 12-24V
	Power Consumption	≤32W (15V)
ENVIRONMENT	IP Rating	Front panel IP65 (IEC60529), Front NEMA 4
	Vibration	1.5Grms, 5~500Hz, 1 hr/axis (IEC6068-2-64)
	Shock	10G, half-sine wave, last 11 ms (IEC6068-2-27)
	Operating Temperature	-10°C~60°C
	Storage Temperature	-20°C~60°C
DIMENSION	Dimension(LWD)	475mm × 296mm × 45.7mm
	Weight	4.6kg



ACCESSORIES

STANDARD



15V 3A Power Adapter



HDMI A-A Cable



VGA Cable



USB-A - C Cable (For Touch)



Video & Audio Cables



Screw Kits



Cable Clamps



Foam Silicone

OPTIONAL



VESA 75/100mm Bracket



Remote Control

